

## WHAT IS A HOSPICE?

A HOSPICE is a service that includes an interdisciplinary approach to END-OF-LIFE care.

A hospice is not a place but rather a philosophy of care.

1

---

---

---

---

---

---

---

---

## GENERAL INFORMATION

- Hospice treats the person and family not the disease.
- Services offered to the patient/family when cure is no longer possible or no longer sought AND prognosis is estimated to be less than six months.
- QUALITY of LIFE becomes the focus.  
symptom and pain management along with emotional, spiritual, social, and physical support

2

---

---

---

---

---

---

---

---

## WHO IS ON HOSPICE?

- AIDS/HIV
- CANCER
- CHF
- DEMENTIA
- LIVER DISEASE
- NEUROLOGIC (Parkinsons, ALS, MS, MD, Myasthenia Gravis)
- PULMONARY DISEASE (COPD)
- RENAL DISEASE
- STROKE/COMA

3

---

---

---

---

---

---

---

---

## THE TEAM

- Medical Director
- Nurses
- Social Workers
- Spiritual Care Counselor (Chaplain)
- Home Health Aide
- Volunteer
- Dietician
- Therapist ( OT, PT, Speech)
- Bereavement Counselor - may last for over one year

---

---

---

---

---

---

---

---

4

## GENERAL GUIDELINES

- Terminal illness with prognosis of <6 months if disease runs its normal course.
- Patient/representative desire palliative care over curative care.
- Documented clinical progression of disease.
- Decline in functional status.

Karnofsky score <50

ADL 3/6 (bathing, dressing, toilet, transfer, continence, feeding)

FAST functional assessment scale

---

---

---

---

---

---

---

---

5

**Karnofsky Performance Scale**

<b>Normal activity, work</b>	
<b>Performance</b>	<b>Score</b>
No complaints	100
Capable of normal activity, minor symptoms	90
Normal activity with some difficulty, some symptoms/signs	80
<b>Increasingly limited or minimal activity, work, independence</b>	
<b>Performance</b>	<b>Score</b>
Cares for self; unable to carry on normal activity or active work	70
Requires occasional help but is able to care for personal needs	60
Requires considerable assistance, frequent medical care	50
<b>Minimal self care</b>	
<b>Performance</b>	<b>Score</b>
Disabled; requires special care/assistance	40
Severely disabled; hospitalization is indicated, not imminent death	30
Very ill; urgent hospitalization/treatment necessary	20
Moribund, rapidly progressing fatal processes	10
Death	0

---

---

---

---

---

---

---

---

6

## GENERAL GUIDELINES

Impaired nutritional status

weight loss > 10% over past 6 months

serum albumin < 2.5 g/L

MISC

Certified by 2 physicians

Benefit period is 90 days and renewable

---

---

---

---

---

---

---

---

7

## FAQs

- Is an advanced directive required?
- Does Medicare cover?
- Who is the Physician in charge?
- Is religion involved?
- Does hospice mean "NO CARE"?
- What if patient lives longer than 6 months?
- Where does hospice care take place?

---

---

---

---

---

---

---

---

8

## CASES

- Heart Disease
- HIV/AIDS
- Liver Disease
- Dementia
- Cancer
- Stroke/Coma
- Neurologic Disease (ALS, Parkinson's, MS, MD, MG)

---

---

---

---

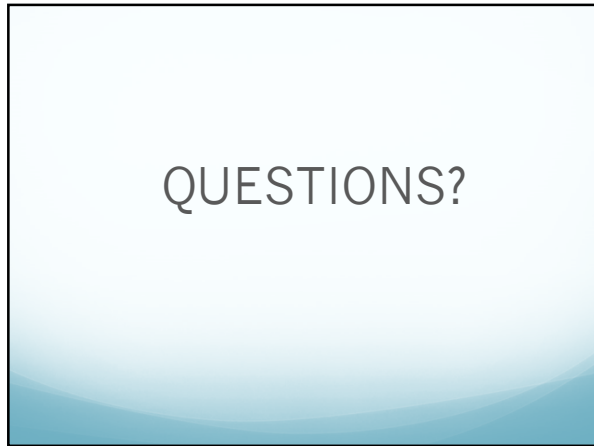
---

---

---

---

9



10

---

---

---

---

---

---

---

---